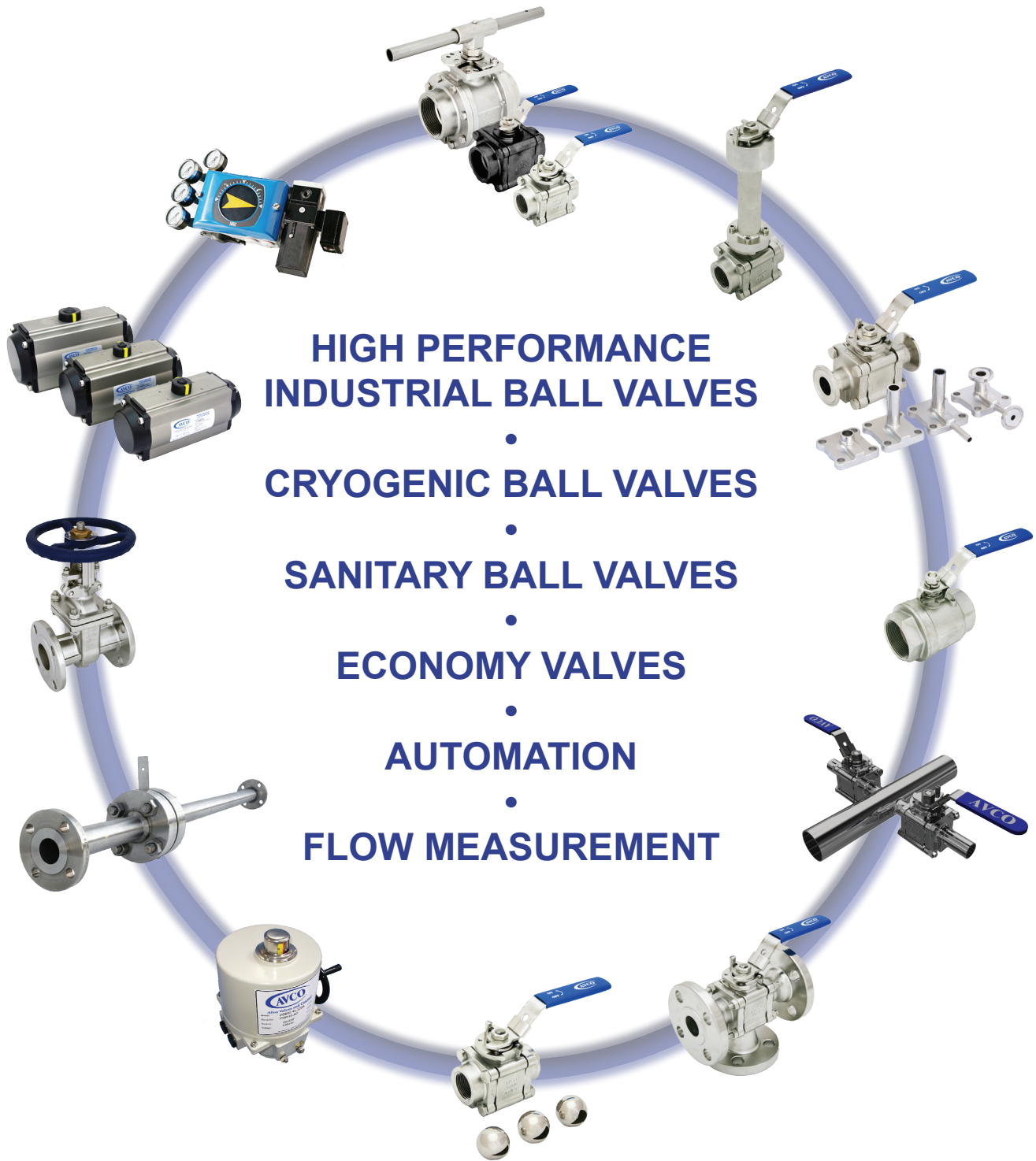




Family of Products



**HIGH PERFORMANCE
INDUSTRIAL BALL VALVES**

•
CRYOGENIC BALL VALVES

•
SANITARY BALL VALVES

•
ECONOMY VALVES

•
AUTOMATION

•
FLOW MEASUREMENT



**AN ISO 9001:2015 CERTIFIED COMPANY
USA ENGINEERED & ASSEMBLED**

*Alloy Valves and Control
Flow Measurement & Control Solutions
Engineered for Engineers*

www.avcovalve.com • Tel: +1 714 427 0877
Email: sales@avcovalve.com

1100 SERIES

USA Engineered & Assembled
CRN Certified
ASME B16.34 Compliant
3 Piece Full Port 2 Way
Fire Safe Ball Valve
ANSI Class 600
2000 WOG



Size:
1/4" thru 4"

Ends:
NPT, Butt Weld, Socket
Weld, Flanged (150#,
300#, 600#), Specials

Body Materials:
316 Stainless Steel
Carbon Steel
Various Alloys

Ball & Stem Materials:
316 Stainless Steel
Various Alloys

Seat Materials:
25% Carbon Filled Teflon
15% Glass Filled Teflon
Teflon, PCTFE, PEEK
UHMWPE, Metal

Service Applications:
Chemical
Dry/Liquid Chlorine
Food Processing
Hydraulic
Water/Oil/Gas
Oxygen, Steam
Thermal Fluids
Vacuum

1500 SERIES

USA Engineered & Assembled
3 Piece Full Port
Fire Safe Cryogenic
Ball Valve
ANSI Class 600
2000 WOG



Size:
1/4" thru 4"

Ends:
NPT, Butt Weld, Socket
Weld, Flanged (150#,
300#, 600#), Specials

Body Materials:
316 Stainless Steel
Hastelloy C
Monel 400

Ball & Stem Materials:
316 Stainless Steel
Hastelloy C, Monel 400

Seat Materials:
25% Carbon Filled Teflon
Teflon
PCTFE

Service Applications:
Aerospace
Cryogenic Service
Food Processing
Liquid H₂
Liquid N₂
Petro-Chemical

1700 SERIES

USA Engineered & Assembled
CRN Certified
ASME B16.34 Compliant
3 Way Bottom Entry
Diverter Ball Valve
ANSI Class 600
2000 WOG



Size:
1/4" thru 4"

Ends:
NPT, Butt Weld, Socket
Weld, Flanged (150#,
300#, 600#), Specials

Body Materials:
316 Stainless Steel
Carbon Steel
Various Alloys

Ball & Stem Materials:
316 Stainless Steel
Various Alloys

Seat Materials:
25% Carbon Filled Teflon
15% Glass Filled Teflon
Teflon, PCTFE, PEEK
UHMWPE, Metal

Service Applications:
Chemical
Dry/Liquid Chlorine
Food Processing
Hydraulic
Water/Oil/Gas
Oxygen, Steam
Thermal Fluids
Vacuum

1800 SERIES

USA Engineered & Assembled
CRN Certified
ASME B16.34 Compliant
3 Way Side Entry
Diverter Ball Valve
ANSI Class 600
2000 WOG



Size:
1/4" thru 4"

Ends:
NPT, Butt Weld, Socket
Weld, Flanged (150#,
300#, 600#), Specials

Body Materials:
316 Stainless Steel
Carbon Steel
Various Alloys

Ball & Stem Materials:
316 Stainless Steel
Various Alloys

Seat Materials:
25% Carbon Filled Teflon
15% Glass Filled Teflon
Teflon, PCTFE, PEEK
UHMWPE, Metal

Service Applications:
Chemical
Dry/Liquid Chlorine
Food Processing
Hydraulic
Water/Oil/Gas
Oxygen, Steam
Thermal Fluids
Vacuum

1900 SERIES

USA Engineered & Assembled
CRN Certified
ASME B16.34 Compliant
3 Piece Vee Port Control
Fire Safe Ball Valve
ANSI Class 600
2000 WOG



Size:
1/4" thru 4"

Ends:
NPT, Butt Weld, Socket
Weld, Flanged (150#,
300#, 600#), Specials

Body Materials:
316 Stainless Steel
Carbon Steel
Various Alloys

Ball & Stem Materials:
316 Stainless Steel
Various Alloys

Seat Materials:
25% Carbon Filled Teflon
15% Glass Filled Teflon
Teflon, PCTFE, PEEK
UHMWPE, Metal

Service Applications:
Chemical
Dry/Liquid Chlorine
Food Processing
Hydraulic
Water/Oil/Gas
Oxygen, Steam
Thermal Fluids
Vacuum

2100 SERIES

USA Engineered & Assembled
CRN Certified
ASME BPE Compliant
3 Piece Sanitary
Full Port Tube OD
Ball Valve
1500 WOG



Size:
1/4" thru 4"

Ends:
Tube OD
Extended Tube OD
Socket Weld Tube OD
Clamp & Vacuum Ends
Flush Bottom Tank Pads
Compression Fittings

Body Materials:
316L Stainless Steel

Ball & Stem Materials:
316L Stainless Steel

Seat Materials:
TFM, PEEK,
UHMWPE,
Cavity Fillers

Service Applications:
Biotech
Clean Steam
Cleaning Solutions
Gas and Air Delivery
High Purity Gases
High Purity Water/Oils
Pharmaceutical
Semiconductor
Vacuum

2500 SERIES

USA Engineered & Assembled
3 Piece Sanitary
Full Port Tube OD
Cryogenic Ball Valve
1500 WOG



Size:
1/4" thru 4"

Ends:
Tube OD
Extended Tube OD
Socket Weld Tube OD
Clamp & Vacuum Ends
Flush Bottom Tank Pads
Compression Fittings

Body Materials:
316L Stainless Steel

Ball & Stem Materials:
316L Stainless Steel

Seat Materials:
25% Carbon Filled Teflon
Teflon
TFM
PCTFE

Service Applications:
Aerospace
Cryogenic Service
Food Processing
Liquid H₂
Liquid N₂
Petro-Chemical

2700 SERIES

USA Engineered & Assembled
CRN Certified
ASME BPE Compliant
3 Way Bottom Entry
Sanitary Full Port Diverter
Tube OD Ball Valve
1500 WOG



Size:
1/4" thru 4"

Ends:
Tube OD
Extended Tube OD
Socket Weld Tube OD
Clamp & Vacuum Ends
Flush Bottom Tank Pads
Compression Fittings

Body Materials:
316L Stainless Steel

Ball & Stem Materials:
316L Stainless Steel

Seat Materials:
TFM, PEEK,
UHMWPE,
Cavity Fillers

Service Applications:
Biotech
Clean Steam
Cleaning Solutions
Gas and Air Delivery
High Purity Gases
High Purity Water/Oils
Pharmaceutical
Semiconductor
Vacuum

2800 SERIES

USA Engineered & Assembled
CRN Certified
ASME BPE Compliant
3 Way Side Entry
Sanitary Full Port Diverter
Tube OD Ball Valve
1500 WOG



Size:
1/4" thru 4"

Ends:
Tube OD
Extended Tube OD
Socket Weld Tube OD
Clamp & Vacuum Ends
Flush Bottom Tank Pads
Compression Fittings

Body Materials:
316L Stainless Steel

Ball & Stem Materials:
316L Stainless Steel

Seat Materials:
TFM, PEEK,
UHMWPE,
Cavity Fillers

Service Applications:
Biotech
Clean Steam
Cleaning Solutions
Gas and Air Delivery
High Purity Gases
High Purity Water/Oils
Pharmaceutical
Semiconductor
Vacuum

2900 SERIES

USA Engineered & Assembled
CRN Certified
ASME BPE Compliant
3 Piece Vee Port Control
Sanitary Full Port
Tube OD Ball Valve
1500 WOG



Size:
1/4" thru 4"

Ends:
Tube OD
Extended Tube OD
Socket Weld Tube OD
Clamp & Vacuum Ends
Flush Bottom Tank Pads
Compression Fittings

Body Materials:
316L Stainless Steel

Ball & Stem Materials:
316L Stainless Steel

Seat Materials:
TFM, PEEK,
UHMWPE,
Cavity Fillers

Service Applications:
Biotech
Clean Steam
Cleaning Solutions
Gas and Air Delivery
High Purity Gases
High Purity Water/Oils
Pharmaceutical
Semiconductor
Vacuum

100 SERIES

Economy 1 Piece
Reduced Port
Ball Valve
1000 WOG



Size:
1/4" thru 2"

Ends:
NPT

Body Materials:
316 Stainless Steel

Ball & Stem Materials:
316 Stainless Steel

Seat Materials:
Teflon

Service Applications:
Chemical
Food Processing
Hydraulic
Steam
Thermal Fluids
Vacuum
Water/Oil/Gas

200 SERIES

Economy 2 Piece
Full Port
Ball Valve
1000 WOG



Size:
1/4" thru 3"

Ends:
NPT

Body Materials:
316 Stainless Steel

Ball & Stem Materials:
316 Stainless Steel

Seat Materials:
15% Glass Filled Teflon

Service Applications:
Chemical
Food Processing
Hydraulic
Steam
Thermal Fluids
Vacuum
Water/Oil/Gas

300 SERIES

Economy 3 Way
Direct Mount Reduced Port
Diverter Ball Valve
1000 WOG



Size:
1/4" thru 2"

Ends:
NPT

Body Materials:
316 Stainless Steel

Ball & Stem Materials:
316 Stainless Steel

Seat Materials:
15% Glass Filled Teflon

Service Applications:
Chemical
Food Processing
Hydraulic
Steam
Thermal Fluids
Vacuum
Water/Oil/Gas

500 SERIES

Economy 3 Piece
Industrial Ball Valve
with No Mount or
Direct Mount Pad
1000 WOG



Size:
1/4" thru 4"

Ends:
NPT, Butt Weld, Socket
Weld

Body Materials:
316 Stainless Steel

Ball & Stem Materials:
316 Stainless Steel

Seat Materials:
15% Glass Filled Teflon

Service Applications:
Chemical
Food Processing
Hydraulic
Steam
Thermal Fluids
Vacuum
Water/Oil/Gas

500 SERIES

Economy 3 Piece
Sanitary Ball Valve
with No Mount or
Direct Mount Pad
1000 WOG



Size:
1/2" thru 4"

Ends:
Tube OD, Extended Tube
OD, Clamp End

Body Materials:
316 Stainless Steel

Ball & Stem Materials:
316 Stainless Steel

Seat Materials:
Teflon, TFM,
Cavity Fillers

Service Applications:
Biotech
Clean Steam
Cleaning Solutions
Chemical
Dairy
Gas and Air Delivery
Food processing
Pharmaceutical
Process Cooling Water
Semiconductor
Vacuum
Waxes

900 SERIES

ASME B16.34 Compliant
Economy 2 Piece Direct Mount
Full Port Flanged
Ball Valve
ANSI Class 150
PN16



Size:
1/2" thru 8"

Ends:
150# Flanged
PN16 Flanged

Body Materials:
316 Stainless Steel
Carbon Steel

Ball & Stem Materials:
304 Stainless Steel
316 Stainless Steel

Seat Materials:
15% Glass Filled Teflon

Service Applications:
Chemical
Food Processing
Oxygen
Steam
Thermal Fluids
Vacuum
Water/Oil/Gas

7100 SERIES

ASME B16.34 Compliant
3 Way/4 Way Multi-Port
Full Port Flanged
Ball Valve
ANSI Class 150



Size:
3/4" thru 12"

Ends:
150# Flanged

Body Materials:
316 Stainless Steel
Carbon Steel

Ball & Stem Materials:
316 Stainless Steel

Seat Materials:
Teflon

Flow Pattern:
L-Port
T-Port
X-Port
I-Port

Service Applications:
Chemical
Food Processing
Oxygen
Steam
Thermal Fluids
Vacuum
Water/Oil/Gas

7100 SERIES

3 Way/4 Way Multi-Port
Full Port Tube OD
Sanitary Ball Valve



Size:
1/2" thru 4"

Ends:
Extended Tube OD
Clamp Ends (BPE)

Body Materials:
316L Stainless Steel

Ball & Stem Materials:
316L Stainless Steel

Seat Materials:
Teflon
TFM

Service Applications:
Biotech
Clean Steam
Cleaning Solutions
Detergents
Gas and Air Delivery
High Purity Gases
High Purity Waters/Oils
Pharmaceutical
Vacuum
Waxes

9100 SERIES

CRN Certified
ASME B16.34 Compliant
2 Piece Full Port
Fire Safe (as Standard)
Flanged Ball Valve
ANSI Class 150 & 300



Size:
1/2" thru 12"

Body Materials:
316 Stainless Steel
Carbon Steel
Alloy 20

Ball & Stem Materials:
316 Stainless Steel
Alloy 20

Seat Materials:
15% Glass Filled Teflon
25% Carbon Filled Teflon
Teflon, PEEK

Service Applications:
Chemical
Food Processing
Oxygen
Steam
Thermal Fluids
Vacuum
Water/Oil/Gas

9500 SERIES

USA Engineered & Assembled
2 Piece Full Port
Fire Safe Cryogenic
Flanged Ball Valve
ANSI Class 150 & 300



Size:
1/2" thru 6"

Body Materials:
316 Stainless Steel

Ball & Stem Materials:
316 Stainless Steel

Seat Materials:
25% Carbon Filled Teflon
Teflon
TFM

Service Applications:
Aerospace
Cryogenic Service
Food Processing
Liquid O₂
Liquid N₂
LNG
Petro-Chemical

9900 SERIES

USA Engineered & Assembled
CRN Certified
ASME B16.34 Compliant
2 Piece Vee Port
Fire Safe (as Standard)
Flanged Ball Valve
ANSI Class 150 & 300



Size:
1/2" thru 12"

Body Materials:
316 Stainless Steel
Carbon Steel
Alloy 20

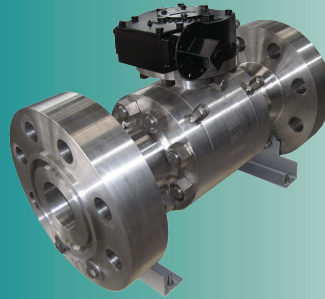
Ball & Stem Materials:
316 Stainless Steel
Alloy 20

Seat Materials:
15% Glass Filled Teflon
25% Carbon Filled Teflon
Teflon, PEEK

Service Applications:
Chemical
Food Processing
Oxygen
Steam
Thermal Fluids
Vacuum
Water/Oil/Gas

11000 SERIES

ASME B16.34 Compliant
Meets API 6D
3 Piece Full Port
Fire Safe
Trunnion Ball Valve
Standard - 11100 Series
Cryogenic - 11500 Series



Size:
2" thru 28"

Ends:
150# thru 2500# RF & RTJ
Flanged, Butt Weld

Body Materials:
304/304L Stainless Steel
316/316L Stainless Steel
Carbon Steel
Low Temp Carbon Steel

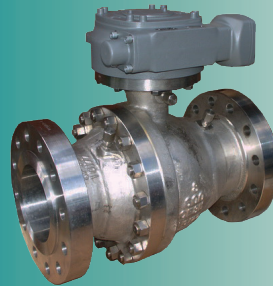
Ball & Stem Materials:
304/304L Stainless Steel
316/316L Stainless Steel

Seat Materials:
Teflon
Nylon
PEEK
Devlon
Metal

Service Applications:
Aerospace
Cryogenic Service
Food Processing
Petro-Chemical
Steam
Thermal Fluids
Water/Oil/Gas

19000 SERIES

ASME B16.34 Compliant
Meets API 6D
2 Piece Full Port
Fire Safe
Trunnion Ball Valve
Standard - 19100 Series
Cryogenic - 19500 Series



Size:
2" thru 28"

Ends:
150# thru 2500# RF & RTJ
Flanged, Butt Weld

Body Materials:
304/304L Stainless Steel
316/316L Stainless Steel
Carbon Steel
Low Temp Carbon Steel

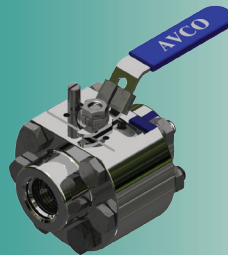
Ball & Stem Materials:
304/304L Stainless Steel
316/316L Stainless Steel

Seat Materials:
Teflon
Nylon
PEEK
Devlon
Metal

Service Applications:
Aerospace
Cryogenic Service
Food Processing
Petro-Chemical
Steam
Thermal Fluids
Water/Oil/Gas

HP1100 SERIES

USA Engineered & Assembled
3 Piece High Pressure
Standard Port
Fire Safe Ball Valve
Up to ANSI Class 2500
6000 WOG



Size:
1/2" thru 2"

Ends:
Threaded NPT
Socket Weld
SAE AS5202

Body Materials:
316 Stainless Steel
Carbon Steel
Various Alloys

Ball & Stem Materials:
316 Stainless Steel
Various Alloys

Seat Materials:
25% Carbon Filled Teflon
PCTFE
PEEK

Service Applications:
Chemical
Food Processing
Hydraulic
Oxygen
Steam
Thermal Fluids
Water/Oil/Gas

METAL SEATED

USA Engineered & Assembled
CRN Certified
3 Piece Full Port 2 Way
Fire Safe Ball Valve
ANSI Class 600
2000 WOG
Up to Class VI Shut-Off



Size:
1/4" thru 4"

Ends:
NPT, Butt Weld, Socket
Weld, Flanged (150#,
300#, 600#), Specials

Body Materials:
316 Stainless Steel
Carbon Steel
Various Alloys

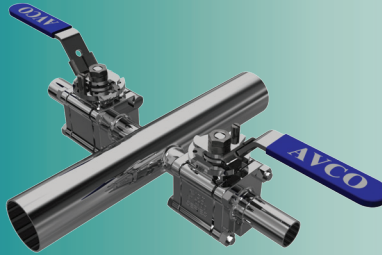
Ball & Stem Materials:
Stainless Steel
Various Alloys

Seat Materials:
Stellite
Various Alloys

Service Applications:
Abrasive Fluids
Chemical
Food Processing
Hydraulic
Water/Oil/Gas
Slurries
Steam
Thermal Fluids

CFOS VALVES

USA Engineered & Assembled
Individual Valves
Manifold Assemblies
ASME BPE Compliant
1000 WOG



Size:
1/4" thru 4" (Valves)
1/4" thru 12" (Manifolds)

Ends:
Extended Tube OD
Pipe Butt Weld
Face Seal
Clamp & Vacuum Ends
Compression Fittings

Body Materials:
316L Stainless Steel

Ball & Stem Materials:
316L Stainless Steel

Configurations:
Single Horizontal Cross
Double Horizontal Cross
Double Vertical Tee
Double Horizontal Tee

Service Applications:
Biotech
Clean Steam
Gas and Air Delivery
High Purity Gases
High Purity Water/Oils
Pharmaceutical
Vacuum
Waxes

CHLORINE VALVES

USA Engineered & Assembled
ASME B16.34 Compliant
3 Piece Full Port 2 Way
Fire Safe Ball Valve
ANSI Class 300
Meets Chlorine Institute
Pamphlet 6



Size:
1/4" thru 4"

Ends:
Threaded NPT
150# Flanged
300# Flanged

Body Materials:
Carbon Steel (WCB)

Ball & Stem Materials:
Hastelloy C
Monel 400

Seat Materials:
25% Carbon Filled Teflon
Teflon

Service Classes:
Class I
Class IV
Other classes available
upon request

EMISSION BONNETS

USA Engineered & Assembled
Contained Leak Detection
System for Industrial & Sanitary
Ball Valves where Tough EPA
Regulations Apply



Valve Compatibility:

1100 Series
1700 Series
1800 Series
1900 Series
2100 Series
2700 Series
2800 Series
2900 Series
9100 Series
9900 Series

Materials:
316 Stainless Steel
Carbon Steel
Alloy 20
Hastelloy
Monel

Service Applications:
Biotech
Chemical
Gas Delivery
Toxic Fluids

1116/1226 SERIES

Gate Valve
ANSI Class 150



Size:
1116 - 1/2" thru 10"
1226 - 1/2" thru 2"

Ends:
1116 - 150# Flanged
1226 - NPT

Body Materials:
316 Stainless Steel

Disc & Bonnet Materials:
316 Stainless Steel

Seat Materials:
Metal

Service Applications:
Chemical
Dry/Liquid Chlorine
Food Processing
Hydraulic
Water/Oil/Gas
Oxygen
Steam
Thermal Fluids

2116/2226 SERIES

Globe Valve
ANSI Class 150



Size:
2116 - 1/2" thru 10"
2226 - 1/2" thru 2"

Ends:
2116 - 150# Flanged
2226 - NPT

Body Materials:
316 Stainless Steel

Disc & Bonnet Materials:
316 Stainless Steel

Seat Materials:
Metal

Service Applications:
Chemical
Dry/Liquid Chlorine
Food Processing
Hydraulic
Water/Oil/Gas
Oxygen
Steam
Thermal Fluids

3116/3226 SERIES

Check Valve
ANSI Class 150



Size:
3116 - 1/2" thru 10"
3226 - 1/2" thru 2"

Ends:
3116 - 150# Flanged
3226 - NPT

Body Materials:
316 Stainless Steel

Disc & Bonnet Materials:
316 Stainless Steel

Seat Materials:
Metal

Service Applications:
Chemical
Dry/Liquid Chlorine
Food Processing
Hydraulic
Water/Oil/Gas
Oxygen
Steam
Thermal Fluids

6100 SERIES

Knife Gate Valve
ANSI Class 150



Size:
2" thru 24"

Ends:
150# Lug

Port Type:
Standard
V-Port
Deflector Cone

Body & Shim Materials:
316 Stainless Steel
Hastelloy

Seat Materials:
Metal
Buna
EPDM
Neoprene
Viton

Service Applications:
Chemical
Food & Beverage
Mining
Power Plants
Paper & Pulp
Waste Water

AUTOMATION

Quarter Turn
Pneumatic Actuator
Double Acting &
Spring Return



Torque rating at 80 psig:
Double Acting
195 thru 28500 in.lbs
Spring Return
50 thru 16500 in.lbs

Temperature Range:
-30 thru 300 °F

Supply Pressure:
35 thru 150 psig

Operation Speed:
0.3 thru 6 seconds
Model Dependent

Features:
Adjustable Travel Stops
NAMUR Solenoid Mount
ISO 5211 Mount
Position Indicator
Blow-Out Proof Pinion

Service Applications:
Chemical
Food Processing
Hydraulic
Water/Oil/Gas
Pharmaceutical
Steam

AUTOMATION

Quarter Turn
Electric Actuator
Non Spring &
Spring Return



Torque rating:
Non Spring Return
135 thru 40000 in.lbs
Spring Return
445 thru 2300 in.lbs

Temperature Range:
-40 thru 150 °F

Supply Voltage:
12v AC/DC thru 230v AC

Operation Speed:
3 thru 150 secs power
3 thru 20 secs spring

Features:
Field Selectable Options
Native Manual Override
ISO 5211 Mount Available
Position Indicator
On/Off/Jog/Proportional

Service Applications:
Chemical
Food Processing
Hydraulic
Water/Oil/Gas
Pharmaceutical
Steam

AUTOMATION

Quarter Turn
Gear Operator
Rugged Worm Drive
ISO 5211 Direct Mount



Torque Rating:
2640 thru 115500 in.lbs

Features:
Waterproof to IP67
Versatile Drive Inserts
ISO 5211 Compatible
Maintenance Free
Self Locking
High Efficiency
Optional Padlock Flange

Body Material:
Cast Iron
Stainless Steel (Optional)

Temperature Range:
-4 thru 175 °F

Service Applications:
Chemical
Food Processing
Hydraulic
Water/Oil/Gas
Pharmaceutical
Steam

AUTOMATION Positioner



Features/Options:
 Mechanical Switches or Reed switches
 4-20mA Feedback
 Pneumatic
 Electro-Pneumatic
 Fail Freeze
 Explosion Proof
 Gas Approved
 Intrinsically Safe
 Dome Indicator
 Standard NEMA 4X
 External Zero/Span Adjust

Material:
 Aluminum

Temperature Range:
 -40 thru 185 °F

Service Applications:
 Chemical
 Food Processing
 Hydraulic
 Water/Oil/Gas
 Pharmaceutical
 Steam

AUTOMATION Limit Switch



Style:
 Mechanical Switches
 Proximity Sensor
 4-20mA Feedback

Temperature Range:
 -40 thru 185 °F

Features:
 Explosion Proof
 Weather Proof
 Position Indicator
 NAMUR Shaft
 Dual Cable Entries
 Captive Cover Bolts

Material:
 Aluminum

Service Applications:
 Chemical
 Food Processing
 Hydraulic
 Water/Oil/Gas
 Pharmaceutical
 Steam

AUTOMATION Declutchable Gear Override with Integral ISO 5211 Mount Pad



Torque Rating:
 2655 thru 195600 in.lbs

Features:
 Integral Actuator Mount
 Weatherproof to IP65
 Coupler Included
 ISO 5211 Compatible
 Compact

Body Material:
 Cast Iron

Handle Material:
 Cast Iron

Service Applications:
 Chemical
 Food Processing
 Hydraulic
 Water/Oil/Gas
 Pharmaceutical
 Steam

AUTOMATION Solenoid Valve NAMUR Direct Mount



Operating Pressure:
 Vacuum thru 150 psig

Temperature Range:
 0 thru 180 °F

Supply Voltage:
 12v AC/DC thru 230v AC

Valve Operation:
 3 Way, 2 Position N.C
 4 Way, 2 Position Single
 4 Way, 2 Position Double

Electrical Connections:
 NEMA 4x with DIN 43650
 NEMA 4x 1/2" NPT Conduit
 Explosion Proof
 Intrinsically Safe

Service Applications:
 Chemical
 Food Processing
 Hydraulic
 Water/Oil/Gas
 Pharmaceutical
 Steam

AUTOMATION Filter Regulator



Maximum Pressure:
 Up to 250 psig

Temperature Range:
 40 thru 175 °F

Features:
 3 thru 40 micron filters
 Tamper Proof Cap
 Low Pressure Option
 Instrument Pressure Option
 Panel Mount Option
 Lockout Option
 Overnight Drain Option

Bowl Materials:
 Polycarbonate
 Metal

Service Applications:
 Chemical
 Food Processing
 Hydraulic
 Water/Oil/Gas
 Pharmaceutical
 Steam

AUTOMATION Handles



Options:
Lever
Locking Lever
Oval
Locking Oval
Spring Return
Fusible Link
Tee Handles
Locking Infinity Handle
Panel Mount
AWWA Stem Nut
Custom Sleeve Colors

Service Applications:
Chemical
Food Processing
Hydraulic
Water/Oil/Gas
Pharmaceutical
Steam

AUTOMATION USA Engineered & Assembled Handle Extension Brackets



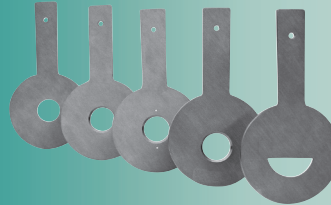
Size:
1/4" thru 4"

Features & Options:
Economy Open Style
Enclosed Style
Custom Heights
Locking Mechanism
Improved Accessibility
Operator Protection
High Temp Applications
Cryogenic Applications

Material:
Aluminum
Stainless Steel

Valve Compatibility:
1100 Series
1700 Series
1800 Series
1900 Series
2100 Series
2700 Series
2800 Series
2900 Series

FLOW MEASUREMENT USA Engineered & Assembled CRN Certified in some Provinces Orifice Plates



Size:
1/2" thru 24"

Style:
Paddle
Universal
Standard Concentric
Counter Bored
Eccentric
Quadrant
Segmental
Restriction
Choked Flow

Class:
150# thru 1500#

Materials:
304 Stainless Steel
316 Stainless Steel
Carbon Steel
Alloy 20
Hastelloy
Monel

Options:
125 RMA Finish
Integral RTJ

FLOW MEASUREMENT USA Engineered & Assembled CRN Certified in some Provinces Universal Orifice Plates Associated Sealing Units



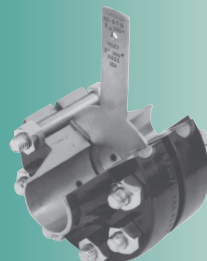
Size:
1/2" thru 36"

Style:
Standard Concentric
Counter Bored
Eccentric
Quadrant
Segmental
Restriction

Seal Types:
Elastomer
Teflon
Metal

Materials:
304 Stainless Steel
316 Stainless Steel
Carbon Steel
Alloy 20
Hastelloy
Monel

FLOW MEASUREMENT USA Engineered & Assembled Orifice Flange Set



Size:
1/2" thru 24"

Class:
150# thru 1500#

Included in Set:
Flanges
Orifice Plate
Gaskets
Jack Screws
Studs
Nuts
Pipe Plugs
Location Dowel (if req.)

Materials:
316 Stainless Steel
Carbon Steel
Alloy 20
Hastelloy
Monel

Face Types:
Raised Face
Ring Type Joint

FLOW MEASUREMENT

USA Engineered & Assembled
Restriction Union
3000# & 6000#

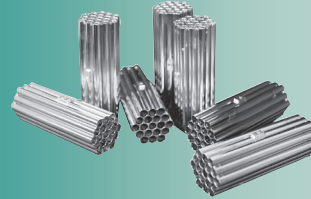


Size:
1/4" thru 2"
Style:
Concentric
Connection:
Socket Weld
Threaded NPT

Material:
316 Stainless Steel
Carbon Steel

FLOW MEASUREMENT

USA Engineered & Assembled
Flow Conditioner

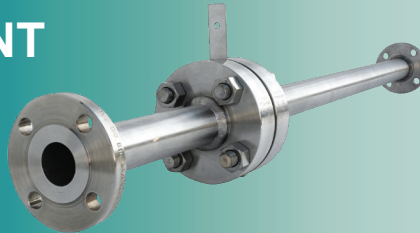


Size:
2" thru 36"
Class:
150# thru 1500#
Type:
Line Fit
Flange Fit
CPA
Standard Bore:
Schedule 40
Schedule 80

Material:
316 Stainless Steel
Carbon Steel
Alloy 20
Hastelloy
Monel

FLOW MEASUREMENT

USA Engineered & Assembled
Complete Meter Run



Size:
2" thru 12"
Class:
150# thru 1500#
Options:
Standard Orifice Flange
Dual Chamber Orifice
Single Chamber Orifice
Flow Conditioner
Venturi
Flow Nozzle
Honed Flow Tubes

Material:
316 Stainless Steel
Carbon Steel
Alloy 20
Hastelloy
Monel
Included Equipment:
Orifice
Upstream Pipe
Downstream Pipe
Manifold
DP Transmitter
Flow Computer

FLOW MEASUREMENT

USA Engineered & Assembled
Flow Nozzle

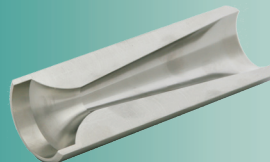


Size:
1/2" thru 24"
Style:
ASME Long Radius
ASME Throat Tap
Class:
150# thru 1500#

Material:
316 Stainless Steel
Carbon Steel
Alloy 20
Hastelloy
Monel

FLOW MEASUREMENT

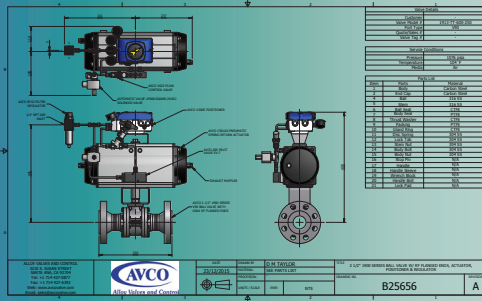
USA Engineered & Assembled
Venturi



Size:
1/2" thru 24"
Style:
Machined Inlet
Rough Cast Inlet
Rough Welded Inlet
7° Exit Cone
15° Exit Cone
Class:
150# thru 1500#

Material:
316 Stainless Steel
Carbon Steel
Alloy 20
Hastelloy
Monel

ENGINEERING ASSISTANCE



General:

AVCO is pleased to offer design assistance with all our products utilizing our in-house designers.

Please feel free to contact us with any specific requirements and we will be happy to oblige.

Examples:

Flow Calculations
Orifice Sizing
Vee Port Sizing
Customized Valve Ends
Skid Layouts
Panel Layouts
3D CAD Models
2D CAD Models
Submittal Drawings
Approval Drawings
MTRs
ISA Datasheets

ADDITIONAL CAPABILITIES

The product specifications, materials and options listed in this brochure are indicative of AVCO products and not exhaustive. Please contact AVCO for any material, end style or specification not listed as it is likely we have it covered. As a manufacturer we can adapt our products to customer requirements and many of our products can be custom built to meet your piping installations.

ISO 9001:2015 QUALITY POLICY

AVCO is committed to meeting requirements and increasing customer satisfaction through continually improving the effectiveness of our Quality Management System. AVCO's mission is to design, manufacture and integrate superior products to better serve our customers' demands and provide engineered solutions for some of the world's harshest operating conditions in piping.

COMPANY PROFILE

Alloy Valves and Control, Inc. (AVCO) is a global leader in innovative engineered valves and instrumentation devices for all types of fluid flow conditions in the piping process market. We were established in 2000 and are proud to be recognized as a 'Made in California' and 'Women Owned' business. We supply standard and custom products with full control over our design and manufacturing processes.

Copyright © 2017 Alloy Valves and Control Inc. All rights reserved. No part of this brochure may be used or reproduced in any manner whatsoever without written permission from AVCO.

This brochure is general in nature and AVCO reserves the right to alter dimensions, materials or make design improvements.

Distributed by: